

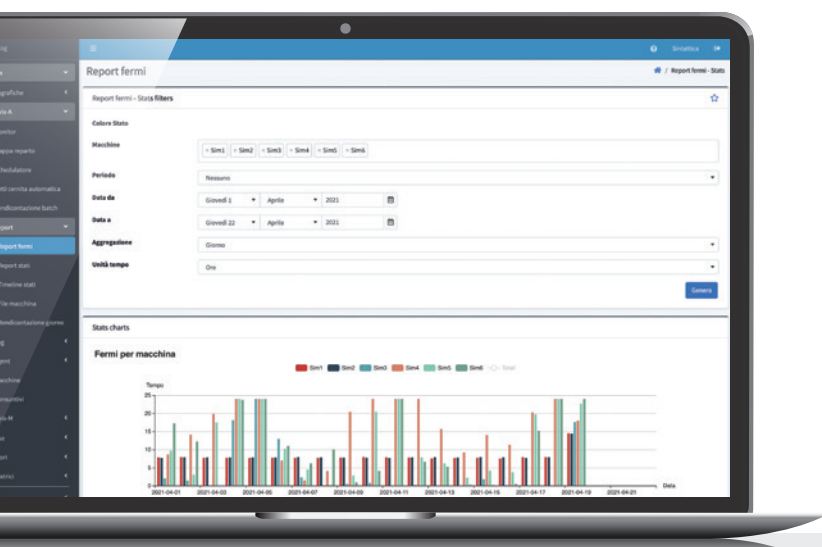
Sintattica Industrial Logic

Take your production efficiency to the next level.
Real-time data and information at your service
for continuous competitive evolution.



The new generation MES that improves the efficiency of your production.

SinLog is capable of connecting and monitoring machines and operators with a versatile and user-friendly solution for both operators and managers.



SINLOG DESKTOP

Installed on a local server, it allows all components to communicate, coordinating data and information from different sources: operators, machines, ERP.

The desktop program has connectors for exchanging data to and from any production management software.

SinLog can be accessed with a web browser from **any device** (PC, tablet, smartphone). No specific hardware is required.

SinLog is **multi-user** and **multi-profile**. Each user has their own credentials and is profiled to access dedicated data and functions.



SINBOX EDGE

SinLog can connect directly to the PLC of each machine to be monitored or, for older machines, use the SinBox Edge hardware device.

Collected data is sent in real time to the server which shows them on the monitor, updates the planner and evaluates the efficiency of the system.

SinBox Edge is easily installed. It picks up electrical signals and communicates via WiFi with SinLog server. It can be placed inside or outside of the machine, depending on availability.

TECHNICAL SPECIFICATIONS

- Dimensions: 70x92x35 mm
- DIN rail for installation in the electrical panel
- Wireless connectivity: WiFi
- Equipped with an external antenna with magnetic base



SINLOG SERVER

All SinBox devices are connected to the SinLog Server, to which they transmit real-time collected data. The information is processed and made accessible and manageable through the Web App.

TECHNICAL SPECIFICATIONS

- Dimensions: 130x120x50 mm
- Operating System: Linux
- 2 Gigabit network cards
- Quad-core CPU
- 8 GB RAM
- 128 GB HD

SINPAD

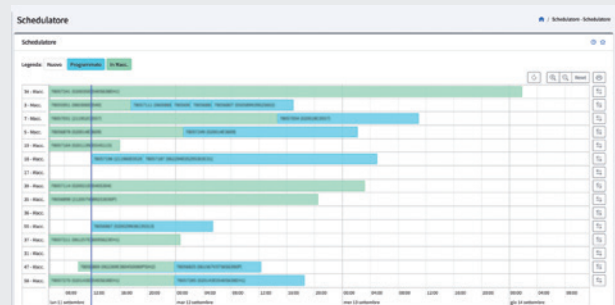
SinPad is the dedicated **WebApp for production operators**. Through a simple and intuitive interface, it allows operators to view batch information, declare the start and end of operations, read messages and instructions to carry out their work effectively.

SinPad can be used on any mobile device with a browser, including tablets and smartphones.



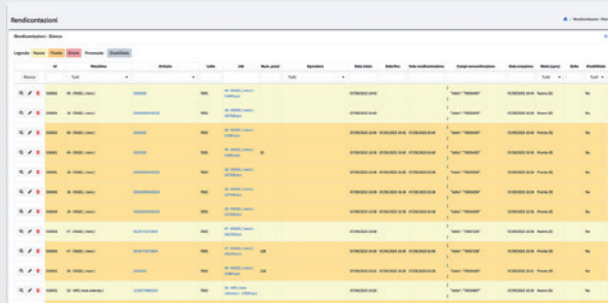
REAL TIME MONITOR

Constantly updated machine situation: machine status, work progress, estimate of batch completion for each machine.



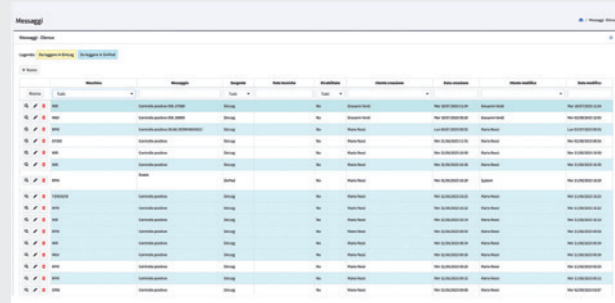
PLANNING

Planning and scheduling of production batches, assigned to machines and represented sequentially on a timeline.



DATA AND REPORTING

Production data collected by operators and machines are **stored** and **always accessible**. They can be sent to the ERP.



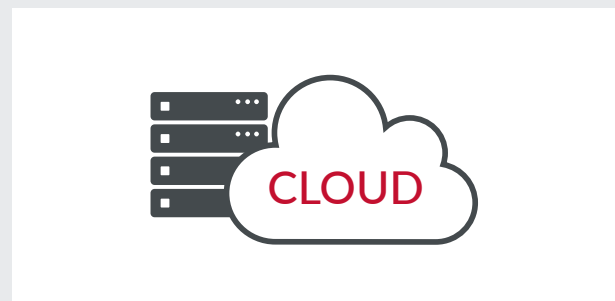
COMMUNICATION WITH EMPLOYEES

Real-time messaging system: messages written in SinLog desktop and viewable by operators, who in turn can reply directly from SinPad.



PLANT MAP

Custom representation of the plant and the physical location of the machines, each with a status indicator. Each machine is constantly monitored, **24 hours a day**.



REMOTE ACCESS

Being web based, SinLog is the ideal tool to **monitor production remotely**, with a standard internet connection.

GRAPHS AND DASHBOARDS

SinLog can be integrated with Grafana, a platform for creating dashboards and graphs in real time or based on time series. The real-time collected data are periodically stored in the dedicated database which groups them in time series and presents them as specific graphs. Represented information is useful for both production control and historical consultation of work phases or machine status.



**REAL-TIME PRODUCTION DATA
MACHINE STATES TIMELINE
CUSTOM CHARTS**

ECOSENSE

Additional SinLog module for **the collection of environmental data**. It's based on a dedicated multisensor, allowing constant monitoring of the environmental data detected by the hardware device to be located in the department.

The sensor is connected to SinLog server which, at configured time intervals, **stores collected data** so that it can be shown in the form of graphs.

SinLog EcoSense offers a tool for **constant monitoring** of environmental conditions in production departments. Thanks to the SinLog ecosystem, data can be correlated with production data recorded by machines and operators. The integrated system thus allows constant control of the situation, checking production and performance trends.

SinLog EcoSense means greater attention: to production quality, to the work environment, to the customer.



TECHNICAL SPECIFICATIONS

- Dimensions: 80x80x42 mm
- WiFi interface

COLLECTED DATA

- Temperature °C
- Relative humidity %
- Air quality (COV) %
- Sound level (dBA)
- Light intensity (lux)

**TODAY, SINLOG IS PRESENT IN DOZENS
OF COMPANIES, WITH AN INSTALLED BASE
OF OVER 550 INTERCONNECTED MACHINES**

**SINLOG IS A SOFTWARE CERTIFIED AS A “FUNCTIONAL ASSET FOR THE
TECHNOLOGICAL AND DIGITAL TRANSFORMATION OF BUSINESSES
ACCORDING TO THE INDUSTRY 4.0 MODEL”**

Sintattica is a company with over 20 years of experience in the IT world, specializing in software development for businesses and process digitalization. As an innovative SME, it inherently focuses on researching and adopting the most advanced technologies to serve the programs it develops.

Sintattica has conceived and continually improves its flagship product: SinLog – Sintattica Industrial Logic, MES software capable of connecting and monitoring machines and operators in various production domains.

SinLog originated in the rubber industry in 2018 and has since been introduced into various other manufacturing sectors.



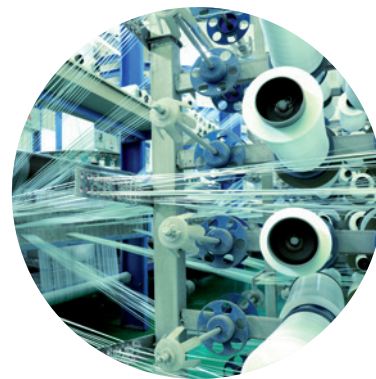
RUBBER INDUSTRY

Monitoring, control, planning and management of machines and operators. From molding to final sorting, passing through all production, finishing and control phases (deburring machines, washing machines, ovens, etc.).



MECHANICAL INDUSTRY

Production control of work centers, CNC machines, assembly stations. Department operator interface and work progress tracking.



TEXTILE INDUSTRY

Remote supervision of weaving machines. Dynamic planner for a real-time glance at the current production.

OPERATIONAL ADVANTAGES



MACHINE AND
OPERATOR
MONITORING



PLANNING AND
ORGANIZATION



MACHINE SETUP
INFORMATION
AND MESSAGING

ECONOMIC ADVANTAGES



SUPERVISION
TIMES



LOW SETUP
COSTS



TIME
SAVING



OPTIMIZATION OF
WORK PHASES



LOW
MAINTENANCE
COSTS



Sintattica Industrial Logic
is a product of Sintattica srl

sales@sinlog.it

+39 030 7400104



Sintattica srl
piazzale Mazzini 8a
25036 - Palazzolo sull'Oglio - BS

info@sintattica.it
sintattica.it

Sinlog-A4V-EN-2024/06

